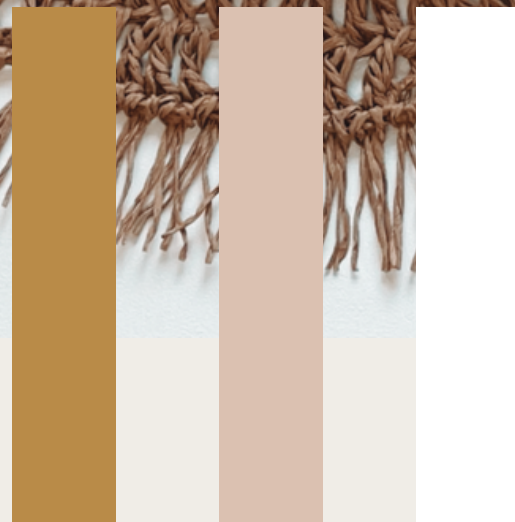
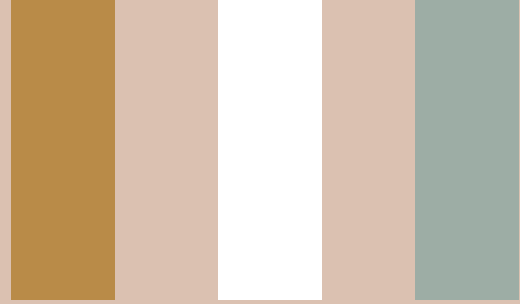


Boho Placemats



INTERIOR





Materials we'll be using

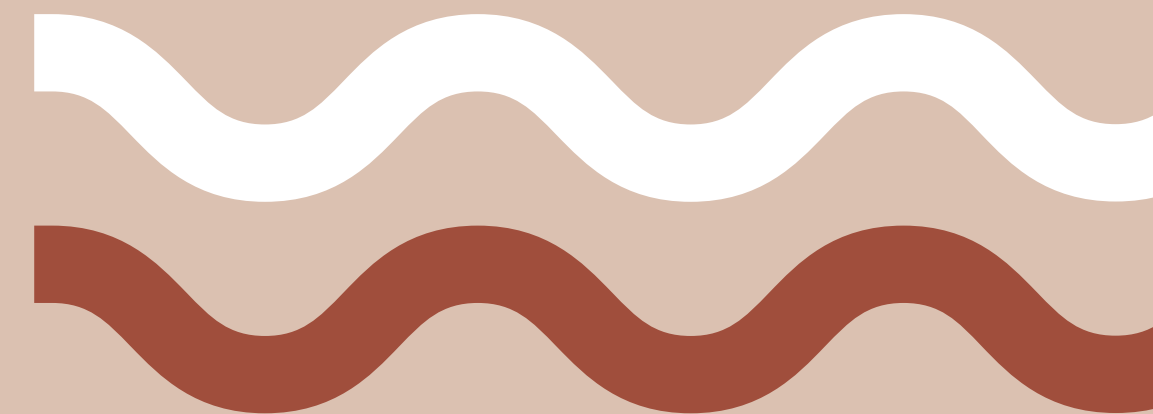
Raffia 80 gr

4.5 mm crochet hook

Scissors

Stitch marker

Measuring tape



Stitches you'll need to know:

Double Crochet (Treble Crochet UK)

Double crochet increase

Magic ring

Foundation Chain (Double Crochet)

Abbreviations we'll be using:

DC - double crochet

INC - increase

FC - Foundation Chain

R - Row

Boho Placemat Pattern

Make a magic Ring with a FC

R₁: 11 DC into a Magic Ring

Connect with an invisible stitch

R₂: FC, DC in same stitch, INC (2 stitches in 1) x 11 = 24 stitches; Connect

R₃: FC, 1 DC in the first stitch, (1DC, 1 INC) x 11, 1 DC= 36 stitches; Connect

R₄: FC, 1 DC (INC, 2DC)x 11, INC= 48 stitches; Connect

R₅: FC, 1 DC in the first stitch (3DC, INC) x 11, 3 DC= 60 stitches; Connect

R₆: FC, 3 DC, (INC, 4DC) x 11, INC = 72 stitches; Connect

R₇: FC, (INC, 5DC) x 11, INC, 4 DC = 84 stitches; Connect

R₈: FC, 5DC (INC, 6DC) x 11, INC = 96 stitches; Connect

R₉: FC, 1 DC in the first stitch (7DC, INC) x 11, 7 DC= 108 stitches; Connect

R₁₀: FC, 7DC (INC, 8DC) x 11, INC= 120 stitches; Connect

R₁₁: FC, 2 DC (INC, 9 DC) x 11, INC, 6 DC= 132 stitches;

Connect

Cut 133 pieces of raffia 8 cm long and attach them all around the last row by folding the piece into a half, using your hook pull it through the stitch, not all the way, only half. Take the loop you just formed and place it over the two ends, pull on the end to close the loop.

Separate the tails to make a fuller border look

Steam and iron the coaster to set everything in place

Cut the edges to make them even

Share your work with me!



If you liked this pattern please share it with me on social media, tag me on Instagram @yarns_design or on Facebook YarnS design. I'll be also sharing a video tutorial for this pattern on my YouTube Chanel yarnS design, so check on that too. Happy crocheting!

